



YLI ELECTRONIC

# Electric Strike for Glass Door

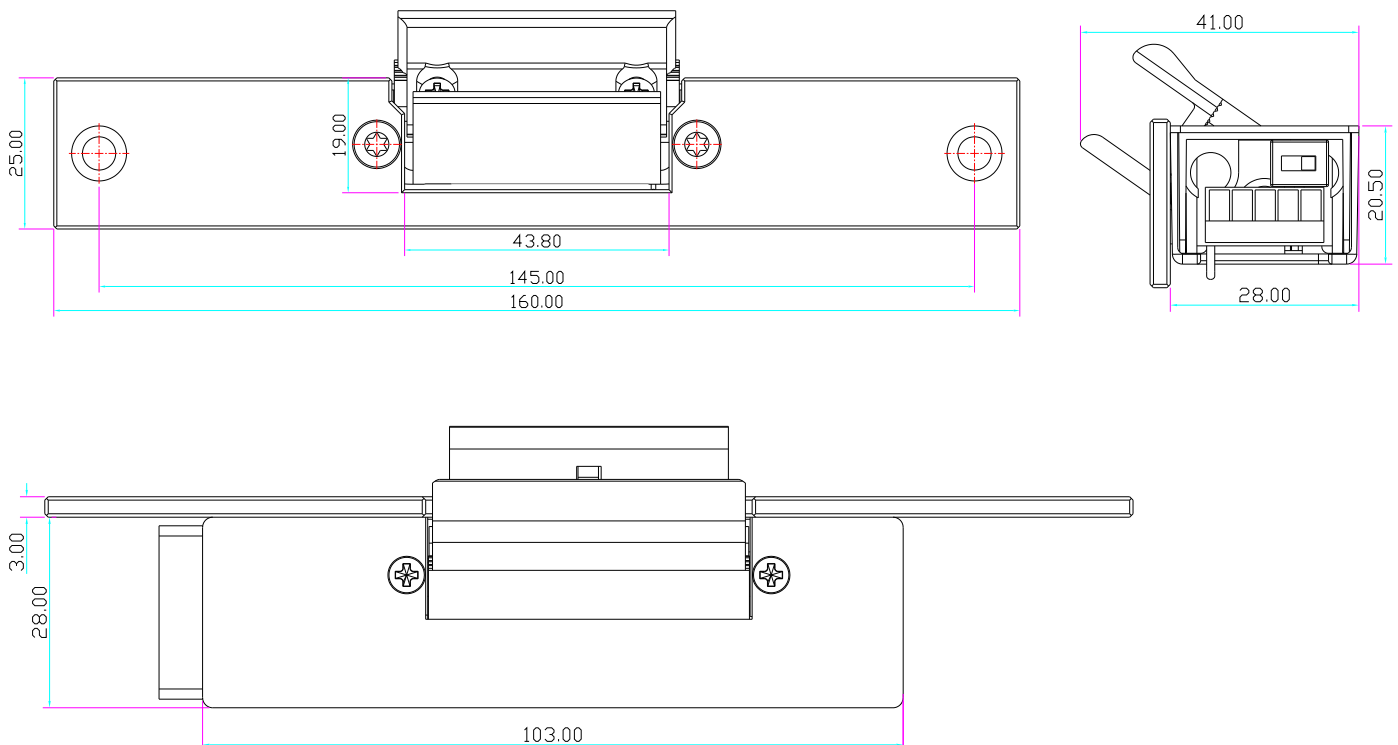
## Model: YS-133NC

CE Patent: No.201420531901.9

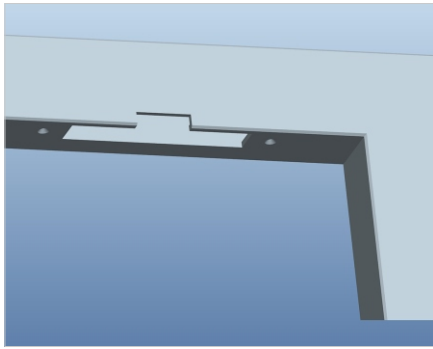
### Specification

<b>Size</b>	160Lx25Wx31H(mm)
<b>Voltage</b>	12VDC(DC24Vneed order)
<b>Current</b>	12VDC/200mA; 24VDC/100mA
<b>Face plate</b>	304 stainless steel force structure
<b>Lock</b>	Zinc alloy(baking varnish by high temperature)
<b>Signal Output</b>	Lock status output NO/NC/COM(YS-133NC-S)
<b>Feature</b>	Fail safe
<b>Glass Thickness</b>	12-15mm
<b>Weight</b>	0.4kg

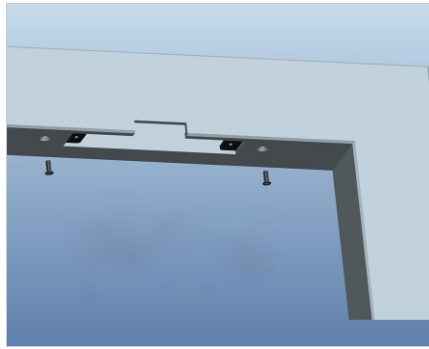
### Diagram(unit:mm)



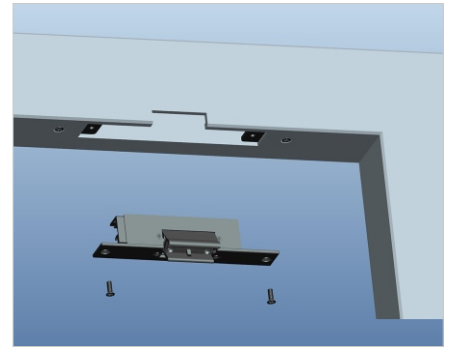
# Installation



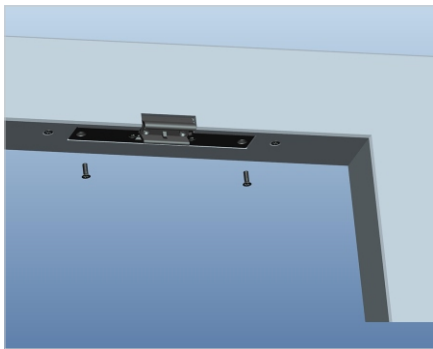
1. Cut hole according to the dimension of strike.



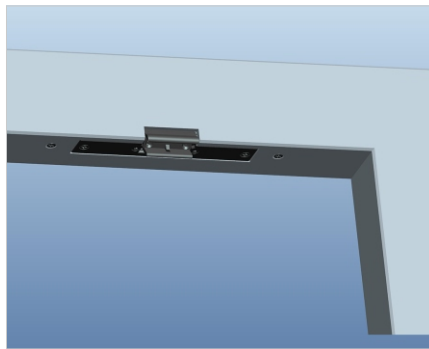
2. Extend the pills.



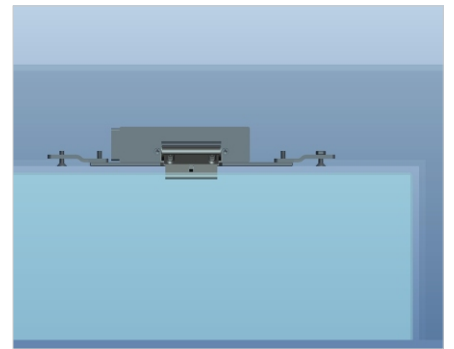
3. Assemble the lock and connect it to the power to test.



4. Fix the electric strike



5. Electric strike finished



# Wire connection

